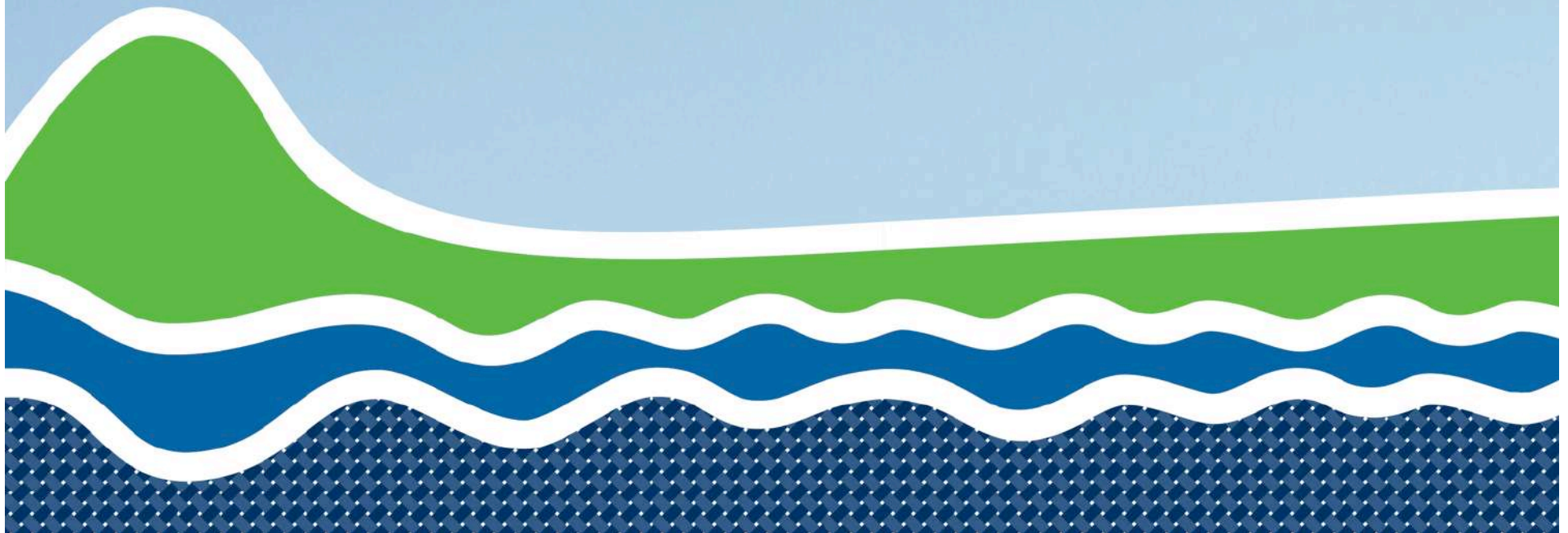


Bay of Plenty Region
Geothermal Programme

Key Work Streams 2016



Regulation (consents/ compliance)



A worker wearing a yellow high-visibility shirt, a blue hard hat with a headlamp, and safety glasses is working on a wellhead. The worker is leaning over a large, rusted metal pipe. The background is dark and appears to be an industrial site.

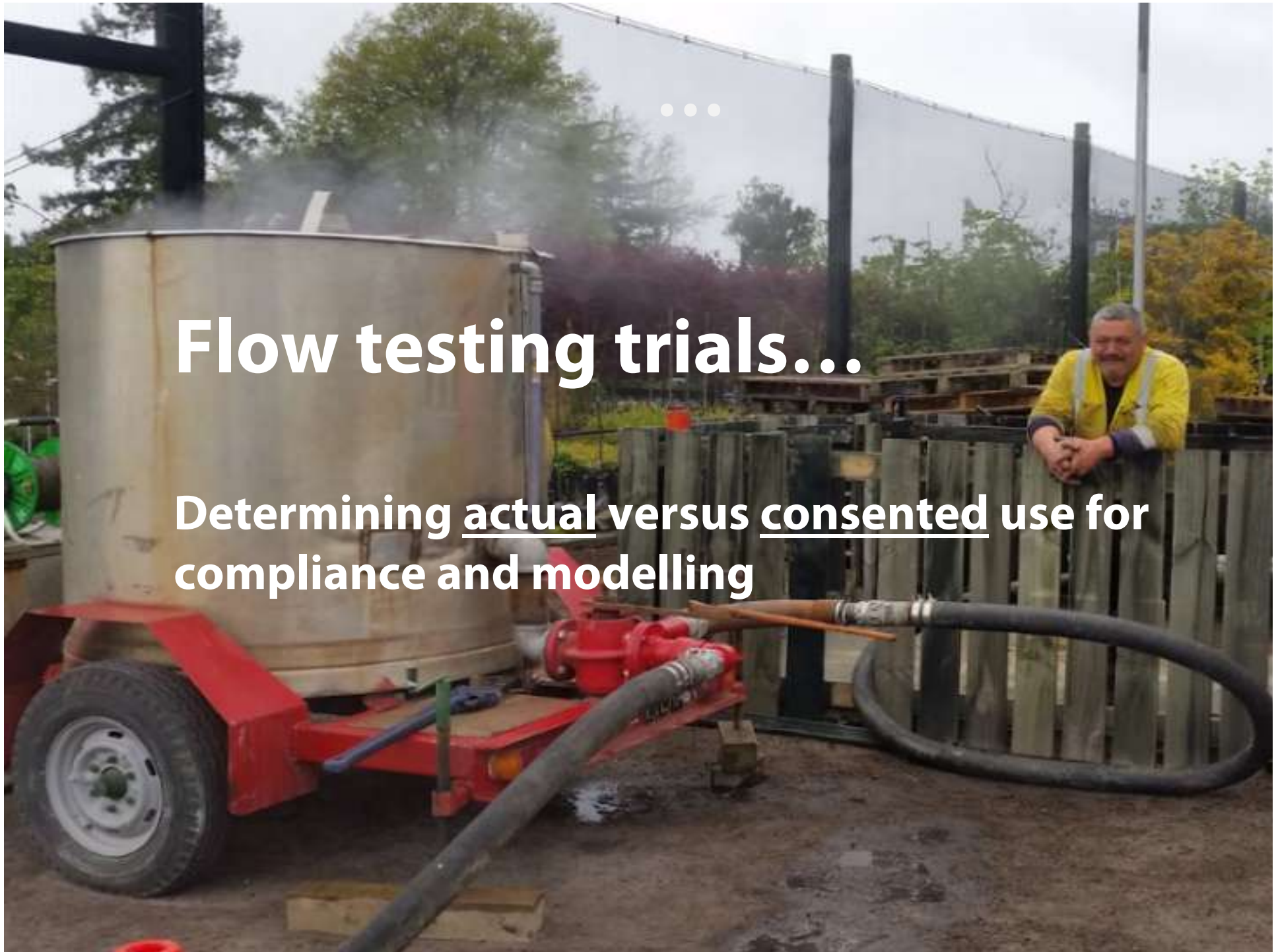
Well maintenance...

- **BOPRC/RLC/WorkSafe working group**
- **Standard Operating Procedures for well maintenance**
- **Well maintenance audits**
- **Workshop for well owners**

...

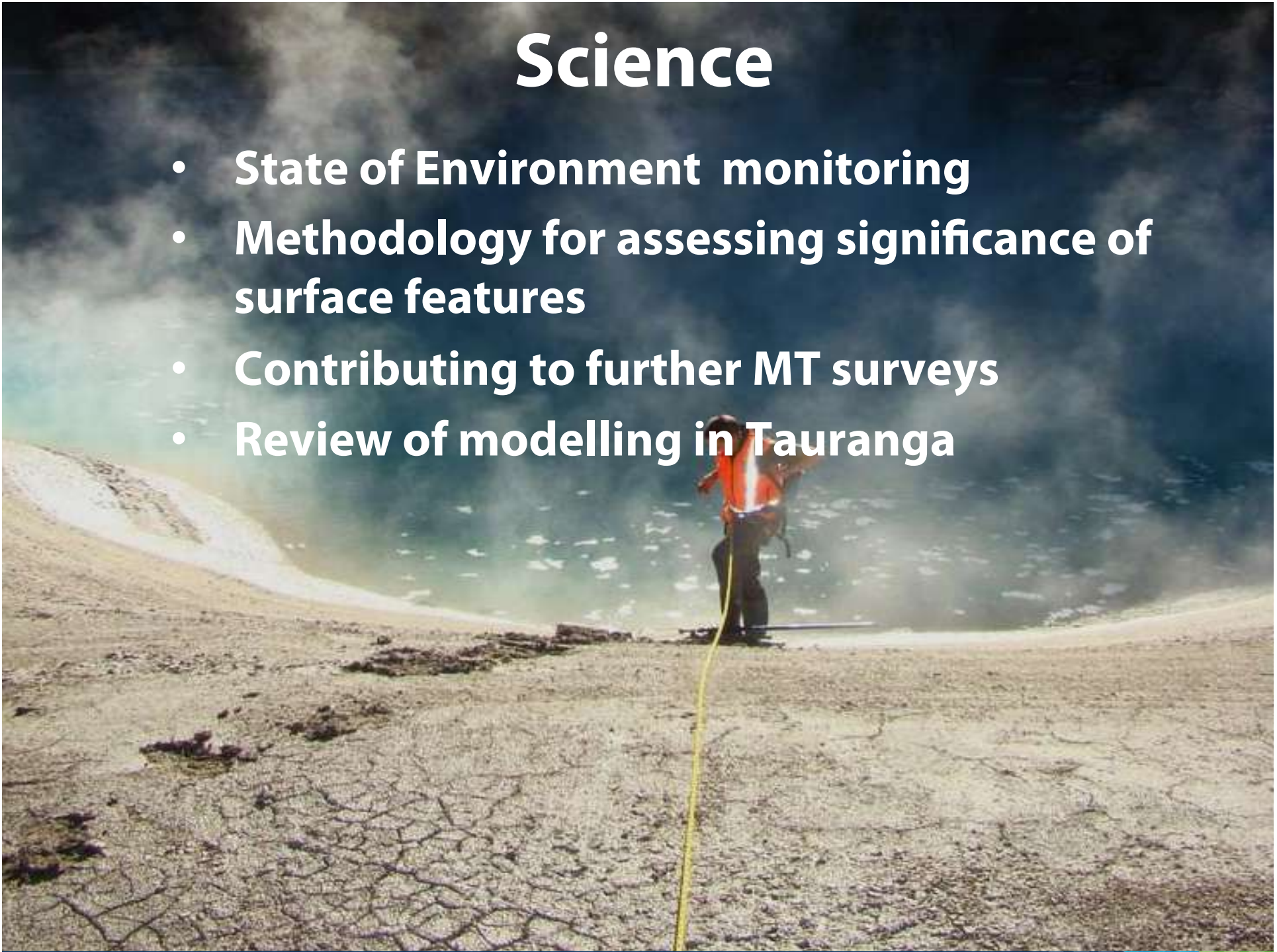
Flow testing trials...

Determining actual versus consented use for compliance and modelling



Science

- **State of Environment monitoring**
- **Methodology for assessing significance of surface features**
- **Contributing to further MT surveys**
- **Review of modelling in Tauranga**



Strategic/Policy

- **Established Rotorua Geothermal Liaison Group**
- **Refreshed MoU with Waikato Regional Council**
- **Drafting of Kawerau System Management Plan**





Community Engagement

- **Pollution Busters**
- **Well maintenance workshop**
- **Youth Jam**



What's coming up in 2017?

- **Complete Kawerau SMP**
- **Review of Rotorua Geothermal Plan**
- **Initiating development of next Long Term Plan**

